

Your Recycling and Waste Collection Calendar

 **recycle**
for South Staffordshire



You make all the difference!

"Together we recycled 47% of your waste last year but with your continued support we can do even better! Thank you"

Councillor Joan Williams, Deputy Leader (Environmental) Services

Recycling Helpline 01902 696203



South Staffordshire Council

Recycle it - use your box!

Green Box

- ✓ Steel & aluminium food and drinks cans.
- ✓ Glass bottles and jars.
- ✓ Plastic bottles.



	food & drink cans
	mixed glass
	plastic bottles

- All food cans, drinks cans, pet food tins & lids.
- Glass bottles, glass jars, heatproof glass, plates, cups, dishes including lids.
- Any squeezable plastic bottles e.g. plastic milk bottles, plastic fizzy drinks bottles, detergent bottles, washing up liquid, shampoo bottles.

- ✗ **NO** yoghurt pots, margarine tubs, blown polystyrene (plastic food trays), cling film, plastic carrier bags, foil, paint tins, aerosols, light bulbs, waxed drinks cartons (Tetra Pak).
- ✗ **NO** recyclables to be put out for collection in black sacks for health and safety reasons, as injuries have been caused when these have contained sharp objects.

Use your Green Box for recycling your glass, cans & plastic bottles all together. Rinse items for hygiene only. Labels and lids **DO NOT** need to be removed. Squash plastic bottles so you can fit more in your box.

If you need another box, lid or net call our Recycling Helpline. In the meantime additional items for recycling can be put out in carrier bags.

visit www.sstaffs.gov.uk

Recycle it - use your sack!

White Sack

- ✓ Paper, newspapers and magazines.
- ✓ Junk mail and telephone directories.
- ✓ Cardboard.



	paper
	newspapers & magazines
	telephone directories
	cardboard

- Junk mail, envelopes, white paper, shredded paper (put in a paper bag).
- Catalogues, brochures, magazines, newspapers.
- Telephone directories & Yellow Pages.
- Brown & grey cardboard including cereal boxes, washing powder boxes, greeting cards, toilet & kitchen rolls, cosmetics, toothpaste & shoe boxes, notepads, card food & drink packaging, frozen food & biscuit boxes, card wine carriers, cardboard boxes, books with paper or card covers.

- ✗ **NO** plastic covers or plastic coated wrapping paper.
- ✗ **NO** plastic or waxed drinks cartons (Tetra Pak). These can be taken to your local recycling centres.
- ✗ **DO NOT** put paper & card in your Green Recycling Box.

All card must be broken down or flattened to a size that will fit into the White Sack provided.
If you need more White Sacks call our Recycling Helpline.

Recycling Helpline 01902 696203

Compost it - use your bin!

Green Bin

- ✓ Grass, leaves, plants & flowers.
- ✓ Twigs, bark & prunings.



garden
waste

- Grass cuttings.
- Weeds, flowers, leaves and bark.
- Hedge and shrub clippings/prunings.
- Twigs/branches up to 5cm across.
- Christmas trees cut into 3ft sections.



- ✗ **NO** food waste, whether cooked or uncooked.
- ✗ **NO** plastic bags or other waste that cannot be composted.
- ✗ **NO** stones & rubble, garden chemicals & pet waste.
- ✗ **NO** bio-degradable bags.

**Why not order another Green Bin for a small one-off charge?
Call our Recycling Helpline.**

If you really can't recycle it - use your...

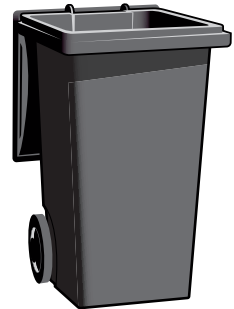
Grey Bin

- ✓ General household waste should only include items which cannot be recycled through your kerbside collection service or other local recycling centres.



household
waste

- Non-recyclable rubbish.



- ✗ **DO NOT** put **RECYCLABLE** items in the Grey Bin.
- ✗ **DO NOT** leave food waste open to the air as flies can lay eggs during this time. Wrap or bag all waste before placing it in the bin.

For the collection crews' safety we CANNOT empty bins where the lid does not close. We CANNOT take any side waste. If Grey Bins are over filled or there is side waste it will be left inside the bin after emptying.

Other ways to reduce your waste

Local Recycling Centres

The Council also provide local recycling centres where you can recycle waxed drinks cartons (Tetra Pak), clothing & shoes, glass bottles & jars, cans and paper. Call our Recycling Helpline for locations or visit www.sstaffs.gov.uk. Carrier bags can be recycled at many supermarkets.

Home composting

At least 30% of your waste can be composted and by using a compost bin you not only reduce the amount of waste going into your bin but produce a great product for your own garden! Home compost bins and accessories are available at discounted prices for South Staffordshire residents.

Call **0845 077 0757** or visit www.recyclenow.com/compost for details.

Disposable nappies

If you stop using disposable nappies and use real nappies instead you could reduce the amount you put in the bin by up to 4%. They can be less expensive and you could also get a £30 payment to help you get started.

Call **01785 277393** or visit www.staffordshire.gov.uk for details.

Where do the materials we collect go?

The material collected by South Staffordshire Council is reprocessed into the range of products below...

- Paper & card is used to make packaging, newspapers, tissues, stationery and other paper in the UK.
- Plastic is shredded and made into fleece clothing, new milk bottles, plant pots and recycling boxes, mainly in Europe.
- Glass & ceramics are crushed and used as aggregates in road making by a UK company.
- Cans are melted down and turned back into metal products in the UK and Europe.
- Garden waste is composted into nutrient rich, environmentally friendly compost used as a soil improver on local farms in Staffordshire.
- Clothing & shoes are reclaimed and exported to other countries. Non-reusable clothing is used in the UK for cleaning cloths.
- Our non-recyclable rubbish will go to landfill, which means it will be buried in the ground and may not breakdown for years, if ever! The amount we landfill in South Staffordshire has reduced by 36% since we established kerbside recycling.

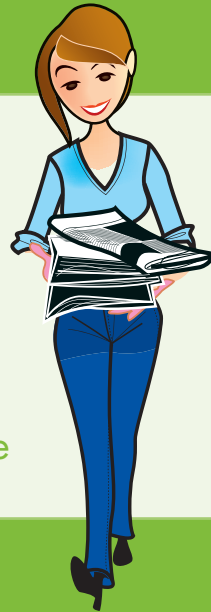
Contact us

If you have any questions or problems please do not hesitate to call our Recycling Helpline as we are working to support you and are continually trying to improve our service.

If you are unable to place any of your items out for collection, we can provide an assisted service.

Recycle your paper and seven days later it could come back as your newspaper

 **recycle**
for South Staffordshire



75%
recycled

This leaflet is printed on
75% recycled paper

If you would like a copy of this document in another language or format (e.g. braille, audio cassette), please contact:

Recycling Team, Environmental Health (General) Services.
Recycling Helpline **01902 696203** or visit **www.sstaffs.gov.uk**
Email: **env.general@sstaffs.gov.uk**



South Staffordshire Council