



As your elected Commissioner my duty is to secure effective and efficient Police and Fire & Rescue services that ensure community needs are met while commissioning services to prevent crime, reduce anti-social behaviour (ASB) and support victims across Staffordshire and Stoke-on-Trent.

I am also responsible for setting the service budgets which are made up of a mix of national government grants and a share of local business rates combined with the contribution that residents make as part of their annual council tax.

Significant progress has been made this year. Our Police are now more local, more visible and more responsive. 999 and 101 are improving rapidly and the service is now aiming to have 2000 officers by April 2024, 400 more than 2019. Our Fire & Rescue service have tackled more incidents, many due to climate change, and continue to target prevention activity at the most vulnerable while doing even more to support the NHS. My office and partners are working to support more victims, notably those impacted by domestic abuse. Staffordshire crime and ASB levels remain low and our services remain focussed on keeping our roads, homes and businesses safe.

We all face financial uncertainty due to the pandemic, the war in Ukraine and high inflation so setting this five-year budget has been testing but the financial position in Staffordshire is relatively strong and allows for investment thanks to both services exceeding their savings targets.

I will always aim to keep your council tax as low as possible and I am very aware of the pressures on household budgets so I have set increases for 2023/24 which are lower than the limits set by government and below headline inflation rates. Even so your contributions will mean more service improvements while securing the future of our Police and Fire & Rescue services.

- 4.83% for Police & Crime (an extra £12 per year for a band D property)
- 4.85% for Fire & Rescue (an extra £3.90 per year for a band D property)

Ben Adams Staffordshire's Police, Fire & Crime Commissioner

Get in touch

Staffordshire Commissioner's Office
Block 9, Weston Road, Stafford, ST18 0YY

Call us: 01785 232385

Email us: pfcc@staffordshire-pfcc.gov.uk

Website: www.staffordshire-pfcc.gov.uk

Social media:

Facebook:
StaffordshirePFCC

Twitter: @StaffsPFCC

Delivering on our plan to keep Staffordshire safe

Staffordshire Police



120 additional Police Officers in 2022 with a further **60 planned** for 2023, taking numbers to **2,000**

88% of 999 calls answered **within 10 seconds** in December 2022, 16th out of 43 forces

More visible policing, **quicker response** and more arrests under the new local policing model



Staffordshire Fire & Rescue



9,606 incidents attended in 2022, 16% up on 2021, including 21 wildfires



More **tall buildings protected** thanks to retro-fitted sprinkler systems

Supporting the NHS with response to falls and covid-19 vaccinations



Staffordshire Commissioner's Office

£3.1m funding won to improve safety for women and girls, ASB and home and business security



Over **55,000** victims of ASB and crime, including domestic abuse, supported between Apr 2021 – Mar 2022

£500k available to invest in technology to help identify vehicles used by criminals on our roads



How we plan to invest in your services

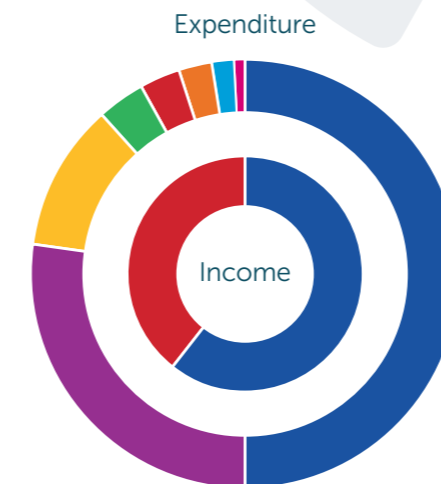
Police & Crime

Income

Government Funding	£147.7m
Council Tax	£95.2m
Total	£242.9m

Expenditure

Police Officer Pay	£121.8m
Police Staff Pay	£66.1m
Premises Transport and Other Services	£26.8m
PCSO Pay	£8.7m
Capital Financing Costs	£8.0m
Commissioned Services	£5.8m
Other Pay Costs	£3.8m
Commissioner's Office	£1.9m
Total	£242.9m



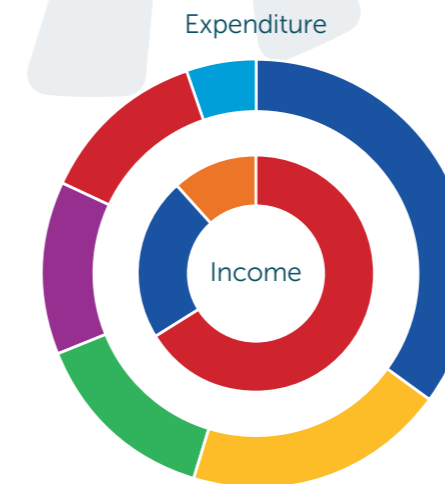
Fire & Rescue

Income

Council Tax	£30.8m
Business Rates	£10.3m
Revenue Support Grant	£5.4m
Total	£46.5m

Expenditure

Wholetime Firefighters Pay	£16.3m
Premises Transport and Other Services	£9.2m
Capital Financing Costs	£6.6m
Fire Staff Pay	£6.1m
On-Call Firefighters Pay	£5.9m
Other Pay Costs	£2.4m
Total	£46.5m

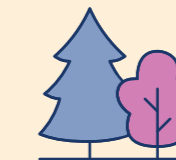


Your Council Tax 2023-24

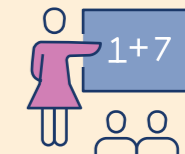
Making the most of your money



Fixing more roads



A cleaner, greener county



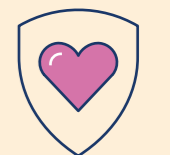
Bright Futures for our children



Active healthy communities



Good quality homes and jobs



Care and support for those in need

Dear Resident,

The last year has seen some monumental changes both nationally and globally. The aftermath of the pandemic, the invasion of Ukraine and the rising cost of living has meant many people across Staffordshire have personally felt the effects of these events.

As a county council, we remain focused on helping our residents, businesses and communities as they continue to cope with the rising cost of living. We are supporting the most vulnerable and working with partners to make sure people can get the advice and help they need to manage rising costs.

As a well-run, financially stable county council, we continue to invest in Staffordshire and its people. To meet our legal responsibilities, around two thirds of our budget will be spent on social care and supporting young people in 2023-24. With the added pressure of inflation, we must invest wisely, live within our means and deliver value for money.

Over the next 12 months we will continue to act on climate change and reduce our carbon emissions. We will fix and upgrade more roads and improve major gateways into our county. We will invest in our economy to make sure Staffordshire is a place that attracts new businesses and supports existing ones to grow, creating more good quality jobs. Added to this, our investments in new and existing schools, skills and fibre broadband will create opportunities for our people and make a real difference to their lives.

We know that these are challenging times. People are under financial pressure and we do not want to add to the burden. However, your council tax directly funds our essential work. We must continue to care for the people who need us the most, and invest in our future, in the face of rising costs and increasing demand for support. So in April we will be increasing council tax by 4.99 per cent, the equivalent of £1.34 per week for a Band D property.

Even with this rise, Staffordshire's council tax remains one of the lowest of any county in England, and will allow us to continue helping those who need it the most.

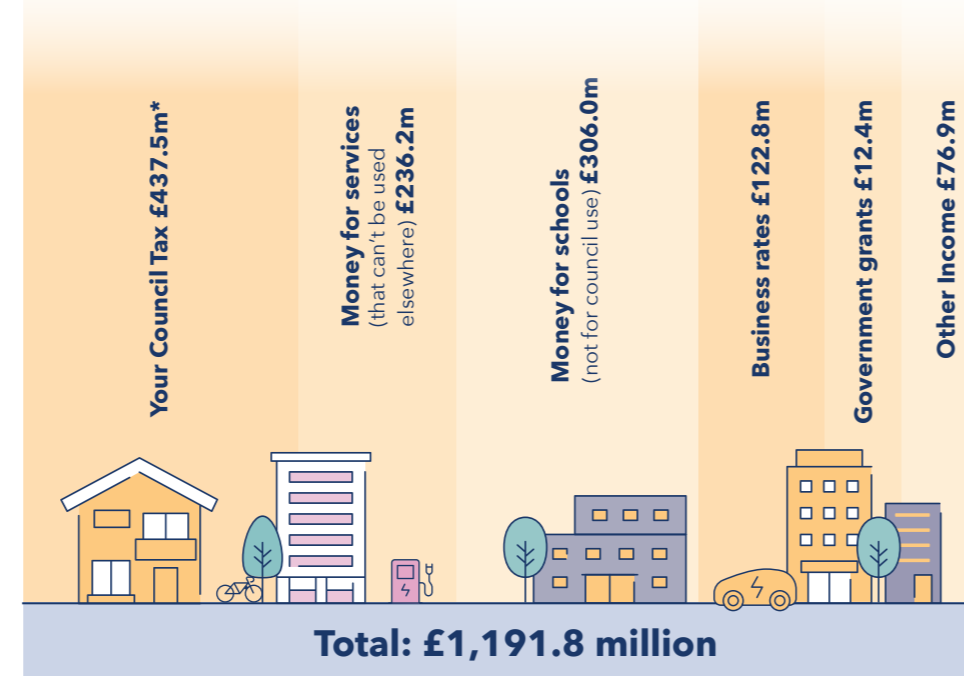
Yours Sincerely,



Alan White
Leader of
Staffordshire
County Council

For details on Council Tax bands in Staffordshire go to: www.staffordshire.gov.uk/CTBands

Where our money comes from



Out of every pound of council tax we spend...



* Council Tax Figure for 2022/23 was £411.2 million

Energy and Climate Change

We are reducing our energy use and switching to green energy at every opportunity. By 2050 we aim to be a net zero organisation, meaning that we take as much carbon out of the atmosphere through things like tree planting, as we put in through our transport or buildings.

We are switching the bulbs in our street lights and buildings to LED, and running many of our gritters on vegetable oil. We are upgrading schools and buildings to be more energy efficient.

There are small things we can all do to reduce carbon emissions, and save money too:



Switch to LED bulbs

LEDs use less electricity, reducing your carbon footprint. Lighting makes up 11% of the average home electricity use, so making the switch will help you save too.



Get into composting

One of the best ways to look after the environment, reduce emissions and save money on green waste collection. You can buy a discounted compost bin for £10 at www.getcomposting.com by inputting your postcode.



Turn heating down by 1 degree

This small change will reduce carbon emissions and be good for your wallet too. You can also cut your electricity bills by turning appliances off rather than leaving them on standby.



Visit your Household Waste Recycling Centre

We recycle more than 47,000 tonnes of waste each year in Staffordshire. But lots of items that could be recycled still end up in our general waste. Learn more about what you can recycle at www.staffordshire.gov.uk/Waste-and-recycling, or visit your local Household Waste Recycling Centre. Our staff are always on hand to help.



More information on saving energy can be found at staffordshire.gov.uk/heretohelp

Areas of Investment



Since 2014 the council's £410 million Economic Growth Programme has helped to create more than 11,000 jobs and seen 4,500 new homes built.



The recent i54 South Staffordshire business park extension will create up to 1,700 new jobs on top of the 3,000 existing jobs on site. A £2 million transformation of Stafford's Shire Hall into a work hub is providing flexible space for small businesses.



Work is underway on the £3.1 million Chatterley Valley West near Kidsgrove, promising another 1,700 new jobs. A new roundabout on the A34 for the new Pets at Home national distribution centre in Stafford, is attracting another 800 jobs.



At the same time, we are spending £50m to repair and maintain our 6,200km of roads and footways.



We are investing £40m in public health, including weight loss schemes to cut diabetes, supporting young people's mental health, and treating drug and alcohol addiction.



We will keep improving schools and creating more places through a £45m new build, extension and upgrade programme, so that more than 90% of parents continue to secure a place at their first-choice school.

More about the council tax

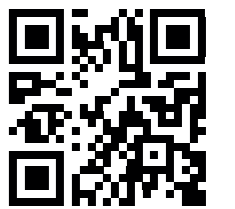
For detailed information about council tax and our spending:

www.staffordshire.gov.uk/counciltax

For general information about the council:

www.staffordshire.gov.uk

Stay Connected



SCAN ME

Download the myStaffs App to access all local services

myStaffs

