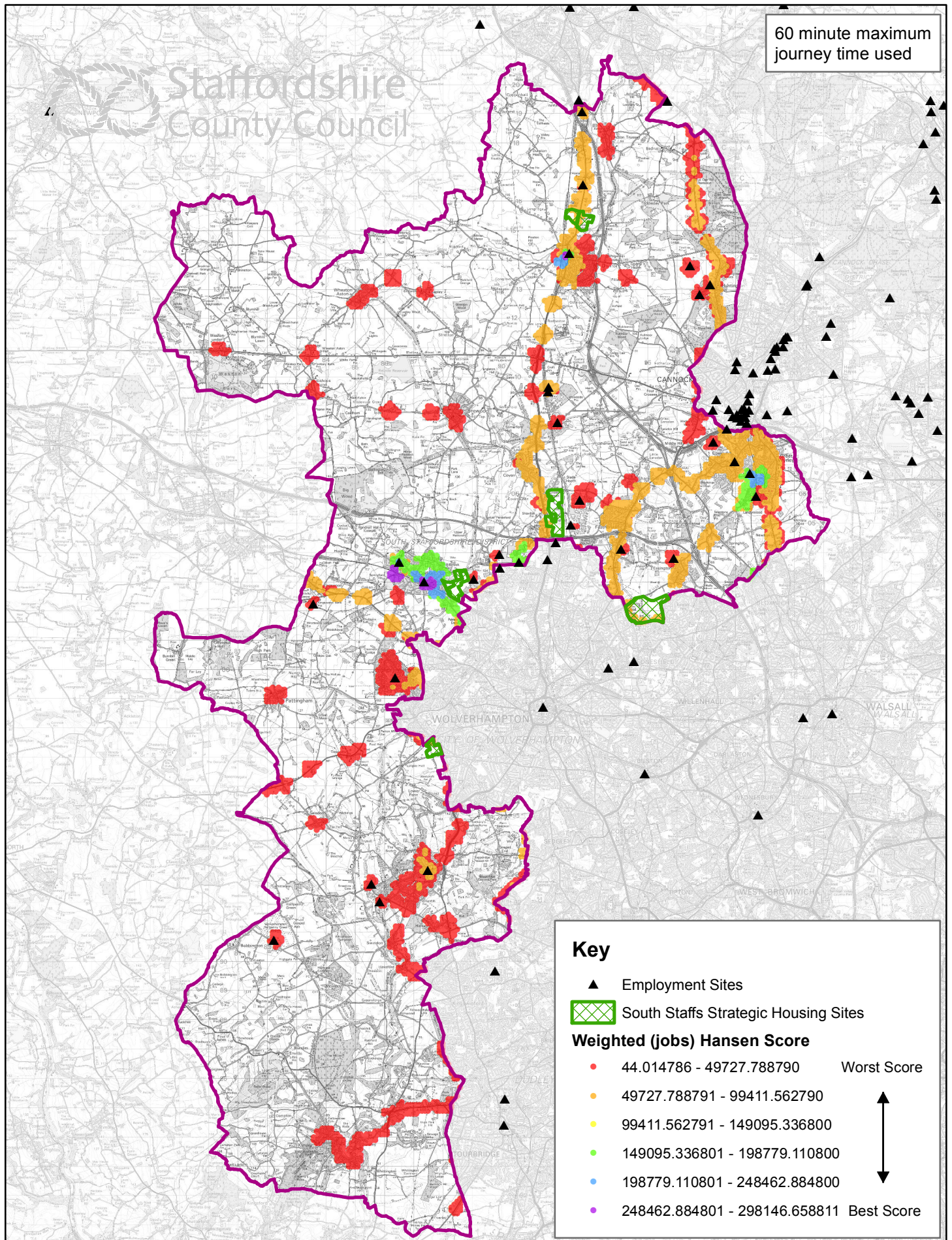


Public Transport Access (Bus and Rail) to Employment Centres Wednesday 07:30 to 09:30 hours



(C) Crown Copyright and database rights 2021. Ordnance Survey 100019422.

You are not permitted to copy, sub-license, distribute or sell any of this data to third parties in any form.

Use of this data is subject to the terms and conditions shown at www.staffordshire.gov.uk/maps

Produced by Staffordshire County Council, 2021.

