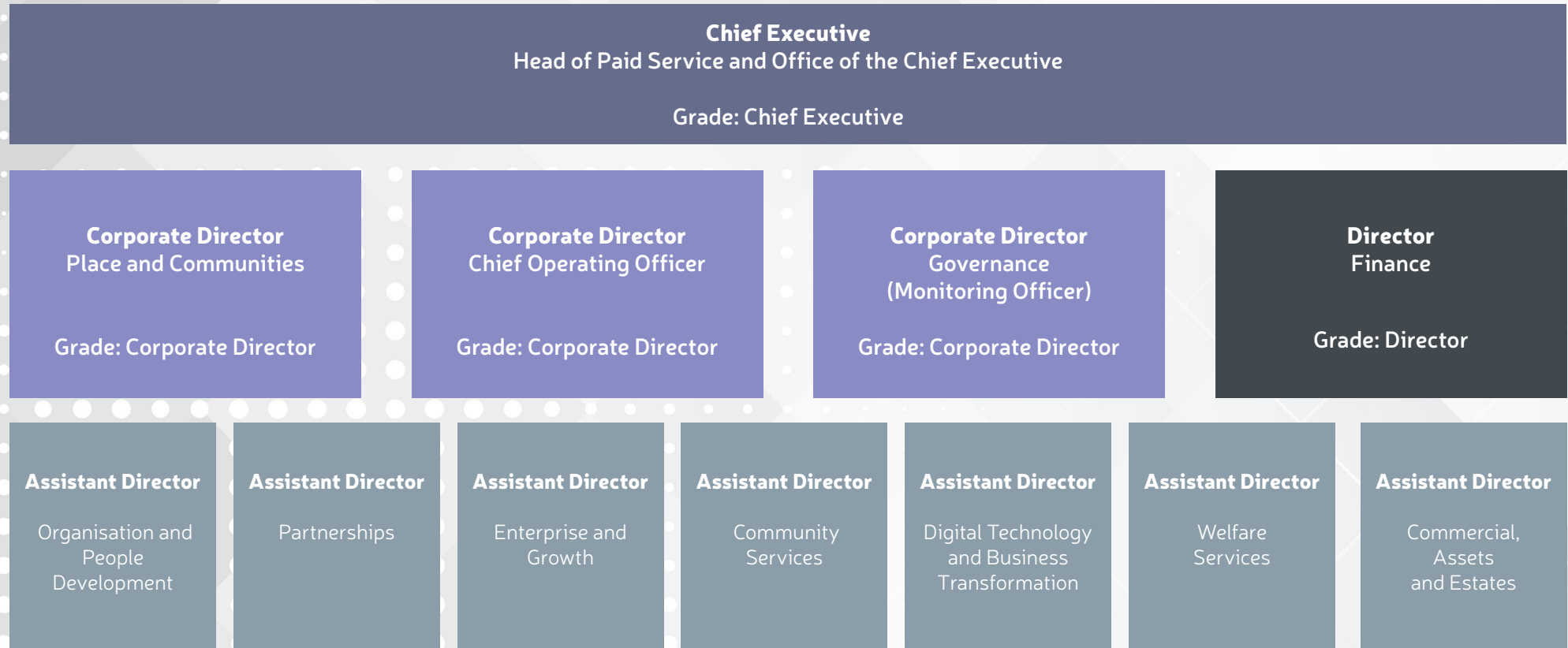


# Leadership Team Organisation Chart 2023



**South Staffordshire Council**



\* At the time of publishing the actual salary or salary range broadly falls within the multiples of £5,000.

\* Salary details (excluding allowances) are set out in the council's Pay Policy.

\* Unless otherwise stated, all posts are appointed on permanent contracts.

### Grades in multiples of £5,000\*

Chief Executive  
 Corporate Directors  
 Director of Finance  
 Assistant Directors

### Salary Band

£120,000 - £125,000  
 £95,000 - £100,000  
 £90,000 - £95,000  
 £70,000 - £75,000